

## FITTING INSTRUCTIONS

### Product description:

#### PFF69-502G - AL CASTER ADJUST-FRONT ARM REAR BUSH

This product is designed to replace front lower control arm-rear bush, and is engineered to provide;

- => revised front ANTI-LIFT geometry, for improved front traction and reduced understeer
- => on-car CASTER adjustment, adjustment range +/-0.33 deg
- => low compliance ball & socket bush design for maximum performance

### Contents (parts per pack):

- 4 x bushes-polyurethane inserts
- 2 x centre balls
- 4 x outer shells
- 1 x adjusting spanner
- 1 x grease

Please read the complete fitting instructions and check package components before fitment. These fitting instructions are to be used as a guide and in conjunction with workshop manual. It is recommended that:

- all work to be carried out by a licenced technician;
- all safety precautions are adhered to;
- wheel alignment to be checked and adjusted after any suspension work.

All fasteners must be tensioned to manufacturer's torque settings.

### Fitting Instructions:

1. Remove front lower control arms from the car.
2. Using a workshop press with suitable adaptors, carefully press out original rear bushes from control arm. Clean bore of any burrs or dirt.
3. With the smaller hole facing outwards, press one of the new half-shells into control arm until it's flush with the arm.
4. Position new polyurethane inserts inside the shells, and liberally apply grease to the inside of PU inserts and outside of centre balls.
5. Place centre balls inside the PU inserts, with the adjusting flats located on the top side of the control arm.
6. Complete bush assembly by pressing the second half-shells (with PU insert) into the arms.

**Important:** To ensure proper fitment and operation, the two half-shells must bottom out on each other inside the arm.

**Tip:** For maximum performance, adjust for maximum positive caster by rotating the centre ball so that the timing marks on the adjustment 'wheel' face outside of the car.

7. Refit refurbished control arms to car.
8. Tighten all hardware to manufacturer's original torque settings.
9. Test drive the vehicle, and perform full wheel alignment check and adjustment.

**To adjust caster:** loosen rear bush mounting bolts (including retaining bracket bolts) and using supplied spanner rotate the centre ball-sleeve to the desired position. If possible, it is best that the centre ball-sleeves are located in the same position.

**Tip:** For maximum vehicle stability, roadholding and performance, adjust to maximum positive caster possible.

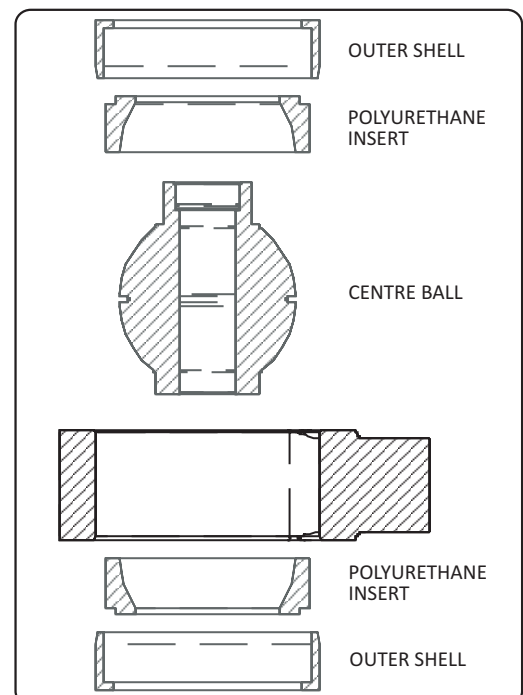
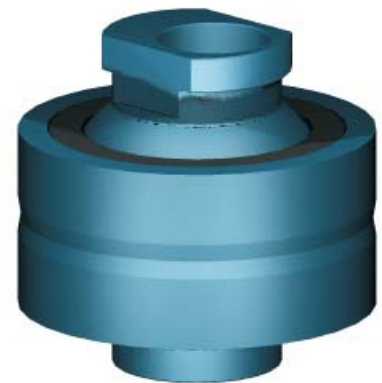


Fig 1. Exploded view.

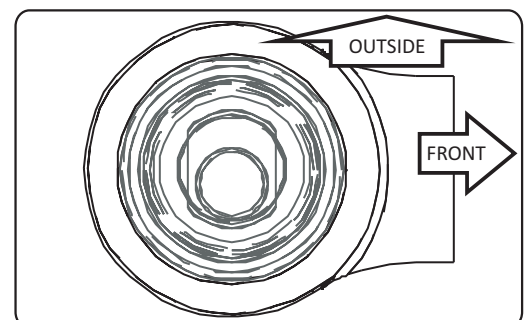


Fig 2. Maximum positive caster setting.

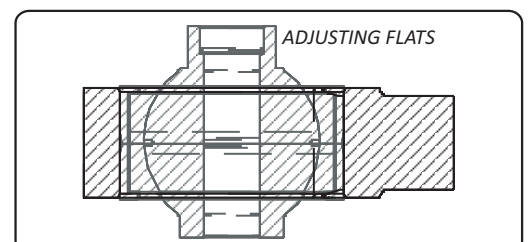


Fig 3. Assembled view.