

POWERFLEX®

PART NUMBER

PFR80-1216

DESCRIPTION

REAR LOWER ARM INNER BUSH

INSTALLATION GUIDE

Contents (parts per pack):

2 x Polyurethane Bushes 1 x PTFE/Silicone Grease
2 x Stainless Steel Sleeves

Please read the complete fitting instructions and check package components before fitment. These fitting instructions are to be used as a guide and in conjunction with workshop manual.

It is recommended that:

- all work to be carried out by a licensed technician;*
- all safety precautions adhered to;*
- wheel alignment to be checked and adjusted as required after any suspension work.*
- All fasteners must be tensioned to manufacturer's torque settings.*



Fitting Instructions:

1. Remove the lower arm from the car and remove the original rubber bush from the arm.

Note: be careful not to bend the arm or distort the two faces of the arm.

2. Clean any dirt and corrosion from the arm and file off any sharp edges.

3. Use a suitable adaptor to fit onto the metal of the outer shell so not pressing onto the polyurethane. Press the new bush into the arm until the larger diameter touches the arm.

Tip: Place a spacer between the two faces of the arm to stop the upper face from collapsing while pressing the bush through.

4. Apply some of the supplied grease into the bore of the polyurethane bush and push in the stainless steel sleeve into the bush.

5. Refit the lower arm back to the car and tension all hardware to manufacturers recommended torque settings.

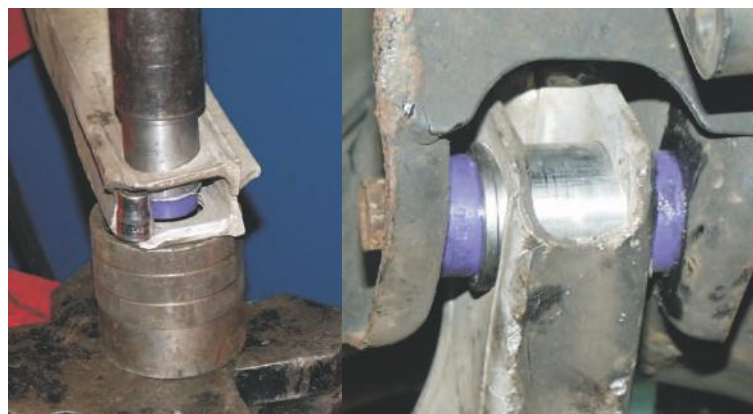


Figure 1